

685 3RD STREET

SAN FRANCISCO CA



## WELL LOCATED CREATIVE SPACE

### PREMISE

**3rd Floor** Approx. 3,500 Sq Ft

**4th Floor** Approx. 3,500 Sq Ft

**5th Floor** Approx. 3,500 Sq Ft

**RATE** \$36.00/RSF/IG

**TERM** 3 - 5 Years

### FEATURES

- Building Recently Renovated
- New Elevator and Lobby
- Retreated Brick and Timber
- Hardwood Flooring
- Small and Efficient Floorplates
- Great Location Near Ball Park and CalTrain



For more information please contact:

**NATHAN CRAWFORD**

415.477.8471

nathan@starboardnet.com

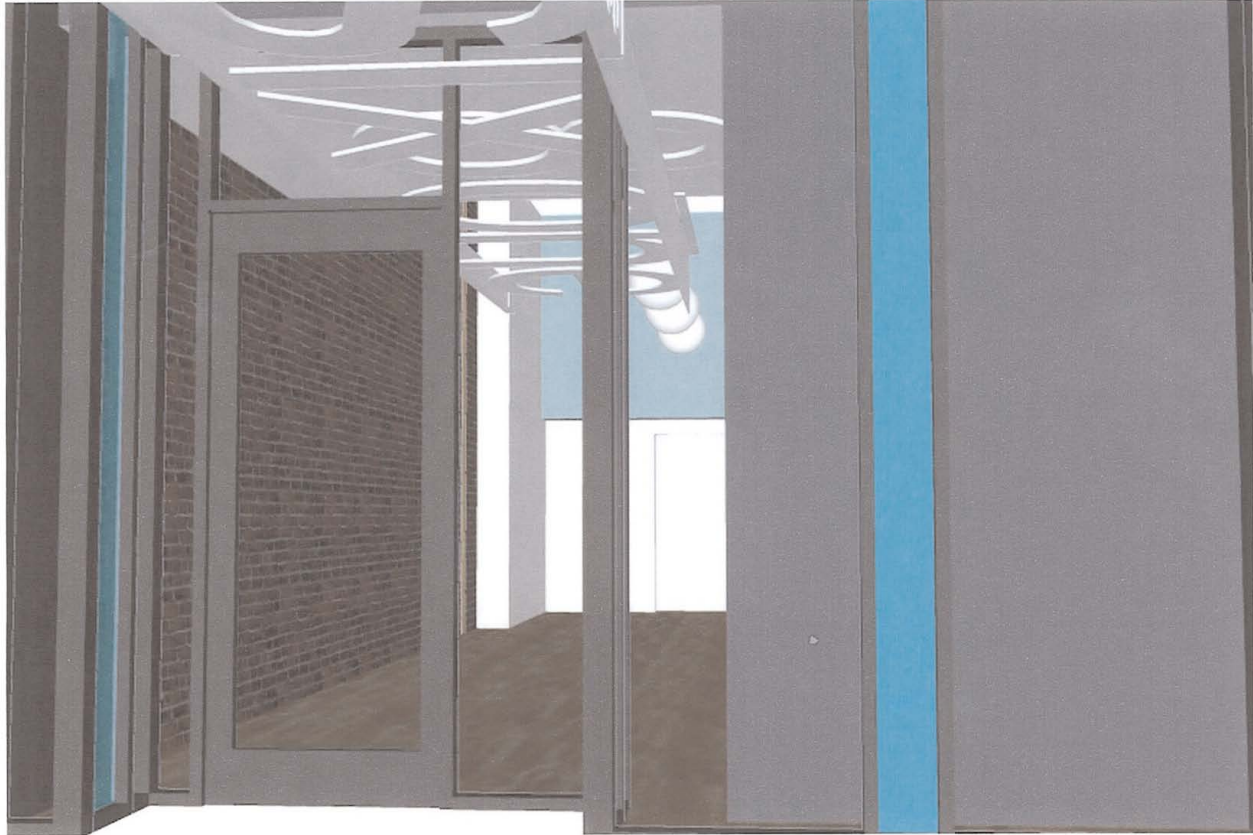
 **STARBOARD TCN**  
WORLDWIDE COMMERCIAL REAL ESTATE  
*Local Focus, Global Reach*

The information has been secured by Starboard TCN from sources believed to be reliable. It is not guaranteed, however, and should be verified prior to consummating any transaction.

 **TCN**  
WORLDWIDE

685 3RD STREET

SAN FRANCISCO CA



## ENTRANCE WAY RENDERING

For more information please contact:

**NATHAN CRAWFORD**

415.477.8471

nathan@starboardnet.com

 **STARBOARD TCN**  
WORLDWIDE COMMERCIAL REAL ESTATE  
*Local Focus, Global Reach*

The information has been secured by Starboard TCN from sources believed to be reliable.  
It is not guaranteed, however, and should be verified prior to consummating any transaction.

 **TCN**  
WORLDWIDE

685 3RD STREET

SAN FRANCISCO CA



## FLOOR PLAN

For more information please contact:

**NATHAN CRAWFORD**

415.477.8471

nathan@starboardnet.com

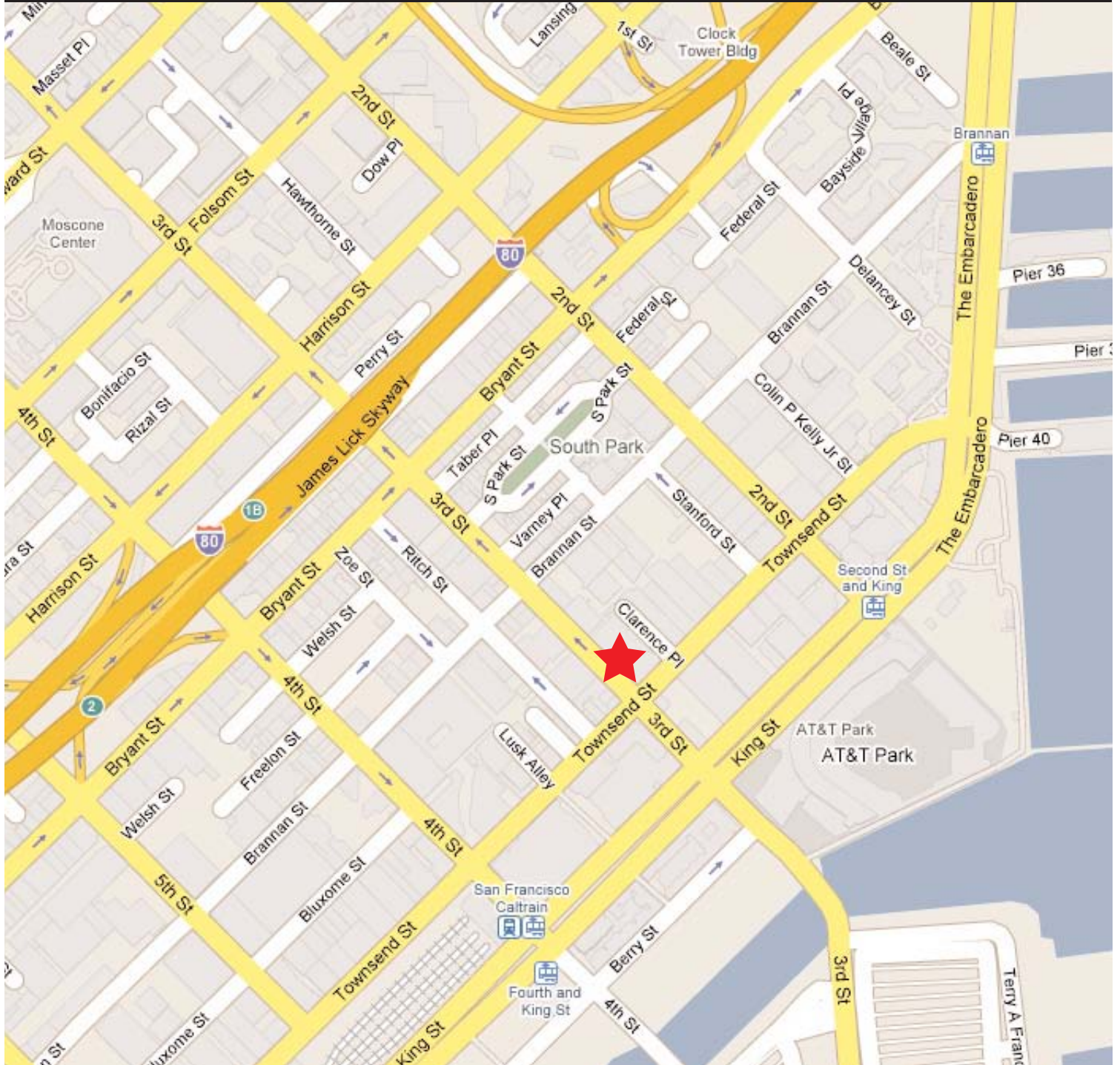
 **STARBOARD TCN**  
WORLDWIDE COMMERCIAL REAL ESTATE  
*Local Focus, Global Reach*

The information has been secured by Starboard TCN from sources believed to be reliable.  
It is not guaranteed, however, and should be verified prior to consummating any transaction.

 **TCN**  
WORLDWIDE

685 3RD STREET

SAN FRANCISCO CA



For more information please contact:

**NATHAN CRAWFORD**

415.477.8471

nathan@starboardnet.com



The information has been secured by Starboard TCN from sources believed to be reliable. It is not guaranteed, however, and should be verified prior to consummating any transaction.

