

# 33 NEW MONTGOMERY

FINANCIAL DISTRICT

SUBLEASE

## "PLUG AND PLAY" SUBLEASE SPACE



### FEATURES:

- "Plug and Play"
- Office Intensive Corner Suite
- Kitchenette
- Reception
- Windowline Offices
- Glass Conference Room
- Server Room

SIZE: 2,342 RSF

TERM: Expires March 31, 2011

### PREMISES: SUITE 1280

New Montgomery Tower is a Class "A" building located at Market St. and New Montgomery St. providing immediate access to the Montgomery St. BART Station and many of the surrounding parking lots.

### PRESENTED BY:

**Cassidy Zerrer**

415.694.5365 direct • [cassidy@starboardnet.com](mailto:cassidy@starboardnet.com)

**Nathan Crawford**

415.477.8471 direct • [nathan@starboardnet.com](mailto:nathan@starboardnet.com)

The information has been secured by Starboard TCN from sources believed to be reliable. It is not guaranteed, however, and should be verified prior to consummating any transaction.

**STARBOARD**  
**TCN OFFICE GROUP**  
*Your Partner in Global Real Estate Solutions*

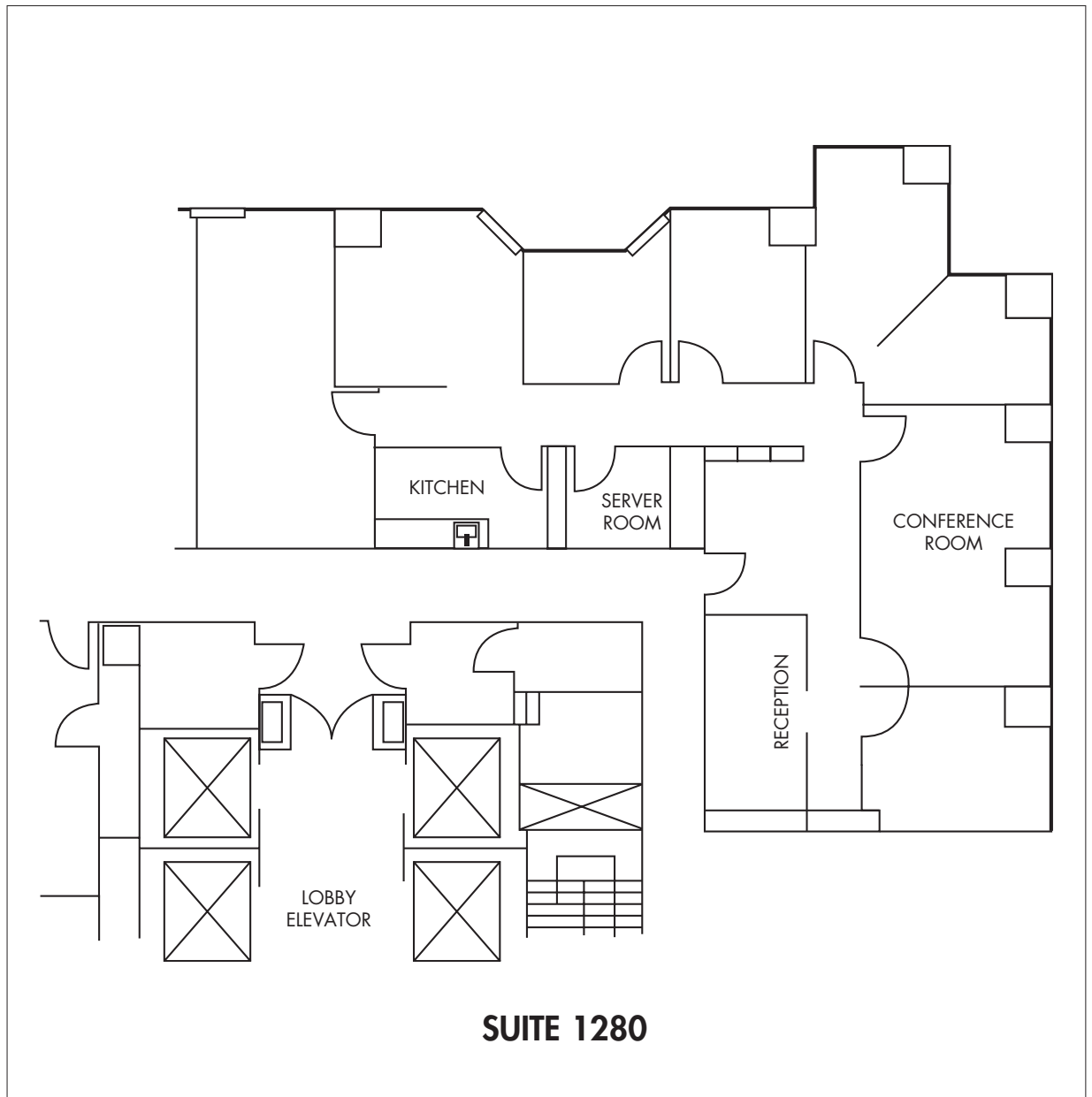
33 New Montgomery St  
Suite 1230  
San Francisco, CA 94105  
415.765.6900  
415.956.2003 f  
[www.starboardnet.com](http://www.starboardnet.com)

**TCN**  
WORLDWIDE

# 33 NEW MONTGOMERY

SUBLEASE

FINANCIAL DISTRICT



33 New Montgomery St  
Suite 1230  
San Francisco, CA 94105  
415.765.6900  
415.956.2003 f  
www.starboardnet.com

PRESENTED BY:

**Cassidy Zerrer**

415.694.5365 direct • cassidy@starboardnet.com

**Nathan Crawford**

415.477.8471 direct • nathan@starboardnet.com

The information has been secured by Starboard TCN from sources believed to be reliable. It is not guaranteed, however, and should be verified prior to consummating any transaction.



**STARBOARD**  
**TCN OFFICE GROUP**  
*Your Partner in Global Real Estate Solutions*

# 33 NEW MONTGOMERY

## FINANCIAL DISTRICT

### SUBLEASE

#### PARKING



- |   |   |   |
|---|---|---|
| 1. 100 Pine Street Garage, 100 Pine St            | 13. Central Parking Systems, 1 California St                    | 24. Priority Parking Services, 41 Tehama St |
| 2. 123 Mission Street Building, 123 Mission St    | 14. Central Parking Systems, 71 Stevenson St                    | 25. SF Parking Inc, 475 Sansome St # 1      |
| 3. 425 Market Street Building, 425 Market St # 1B | 15. City Park, 55 Hawthorne St                                  | 26. SF Parking Inc, 500 Howard St           |
| 4. 550 Kearny Garage (at Sacramento & Spring)     | 16. Ellis-O'Farrell Parking Garage, 123 O'Farrell St            | 27. Shorestein Co, 555 California St        |
| 5. Ace Parking, 201 Mission St                    | 17. Embarcadero Center Parking Garage,<br>3 Embarcadero Ctr # A | 28. Standard Parking, 235 Pine St           |
| 6. Ampco System Parking, 521 Mission St           | 18. Fifty Fremont Street Building, 50 Fremont St                | 29. Standard Parking, 1 Bush St             |
| 7. Ampco System Parking, 201 Spear St # 1560      | 19. Five Star Parking, 250 Clay St                              | 30. Union Square Garage, 333 Post St        |
| 8. Ampco System Parking, 220 Bush St # 4287       | 20. Hearst Parking Center, 45 3rd St                            | 31. US Parking Inc, 276 Main St             |
| 9. Ampco System Parking, 333 Bush St              | 21. Paramount Valet Parking, 680 Mission St                     | 32. US Parking, 150 1st St                  |
| 10. Ampco System Parking, 320 California St       | 22. Priority Parking, 85 2nd St                                 | 33. White House Garage, 223 Sutter St       |
| 11. Ampco System Parking, 444 Stockton St         | 23. Priority Parking, 222 Kearny St                             |   |

#### PRESENTED BY:

##### Cassidy Zerrer

415.694.5365 direct • cassidy@starboardnet.com

##### Nathan Crawford

415.477.8471 direct • nathan@starboardnet.com

The information has been secured by Starboard TCN from sources believed to be reliable. It is not guaranteed, however, and should be verified prior to consummating any transaction.

**STARBOARD**  
**TCN OFFICE GROUP**  
*Your Partner in Global Real Estate Solutions*

33 New Montgomery St  
Suite 1230  
San Francisco, CA 94105  
415.765.6900  
415.956.2003 f  
www.starboardnet.com

