

2665 Mission Street

San Francisco, CA



Best Retail Block on Mission Street

Mission District

SIZE

Aprox. 10,000 Sq. Ft. divisible to 5,000 Sq. Ft.

TERM

Negotiable

POSSESSION

Arranged

FEATURES

- Very High Foot Traffic
- Strong Surrounding National Tenants
- High Identity Building
- Excellent Signage
- High Ceilings
- 2 ADA Bathrooms

FOR MORE INFORMATION CONTACT:

LOUIS CORNEJO

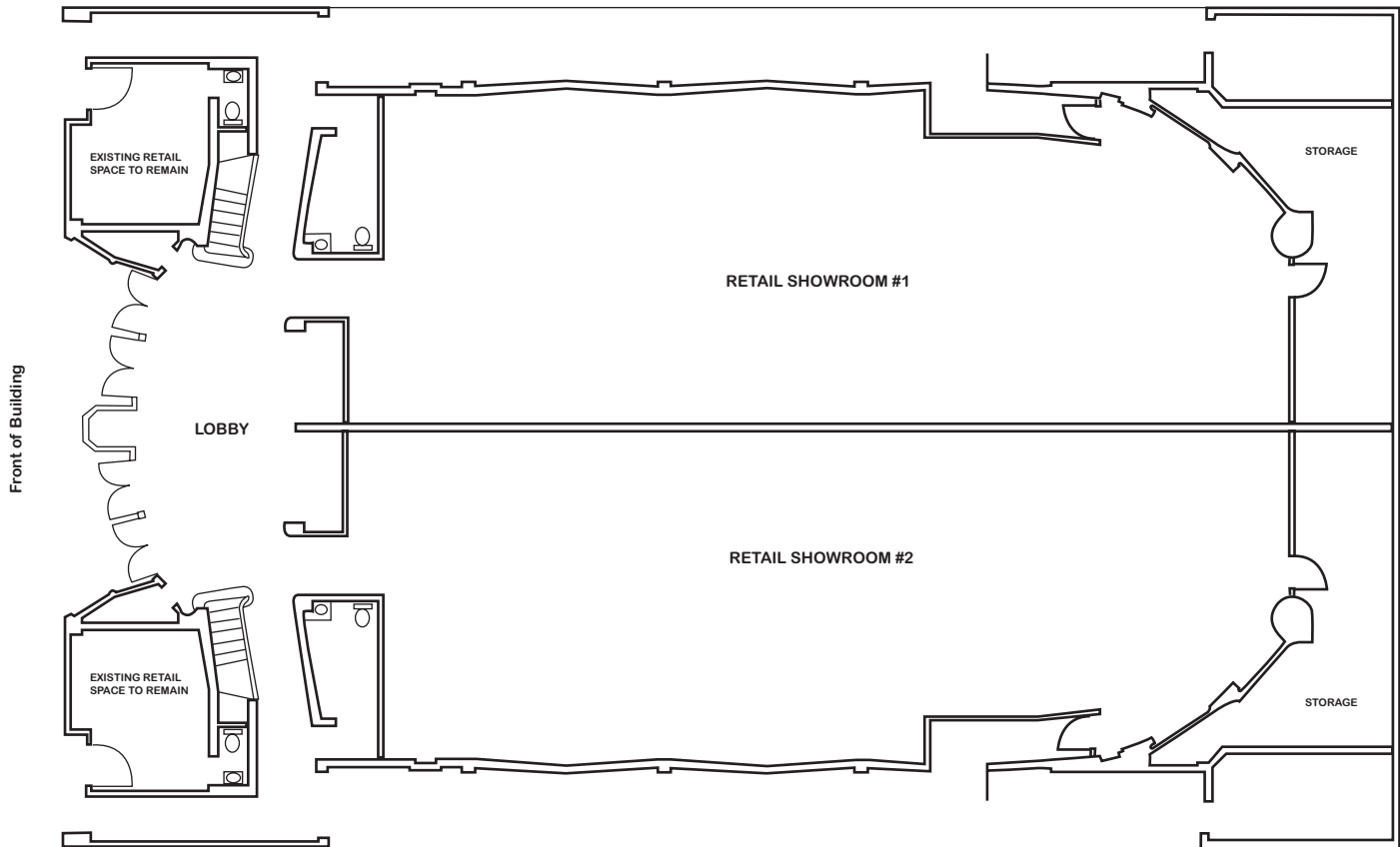
415.438.2144 • louis@starboardnet.com

SUSAN JORDAN

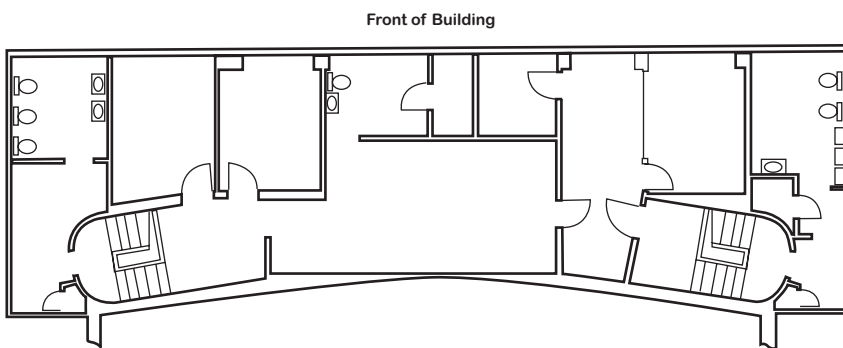
415.477.8498 • susan@starboardnet.com

The information has been secured by Starboard TCN from sources believed to be reliable. It is not guaranteed, however, and should be verified prior to consummating any transaction.

 **STARBOARD
TCN RETAIL GROUP**
Where Retail Comes to Life



FIRST FLOOR PLAN



SECOND FLOOR PLAN

FOR MORE INFORMATION CONTACT:

LOUIS CORNEJO

415.438.2144 • louis@starboardnet.com

SUSAN JORDAN

415.477.8498 • susan@starboardnet.com

The information has been secured by Starboard TCN from sources believed to be reliable. It is not guaranteed, however, and should be verified prior to consummating any transaction.

STARBOARD
TCN RETAIL GROUP
Where Retail Comes to Life

2665 Mission Street

San Francisco, CA



FOR MORE INFORMATION CONTACT:

LOUIS CORNEJO

415.438.2144 • louis@starboardnet.com

SUSAN JORDAN

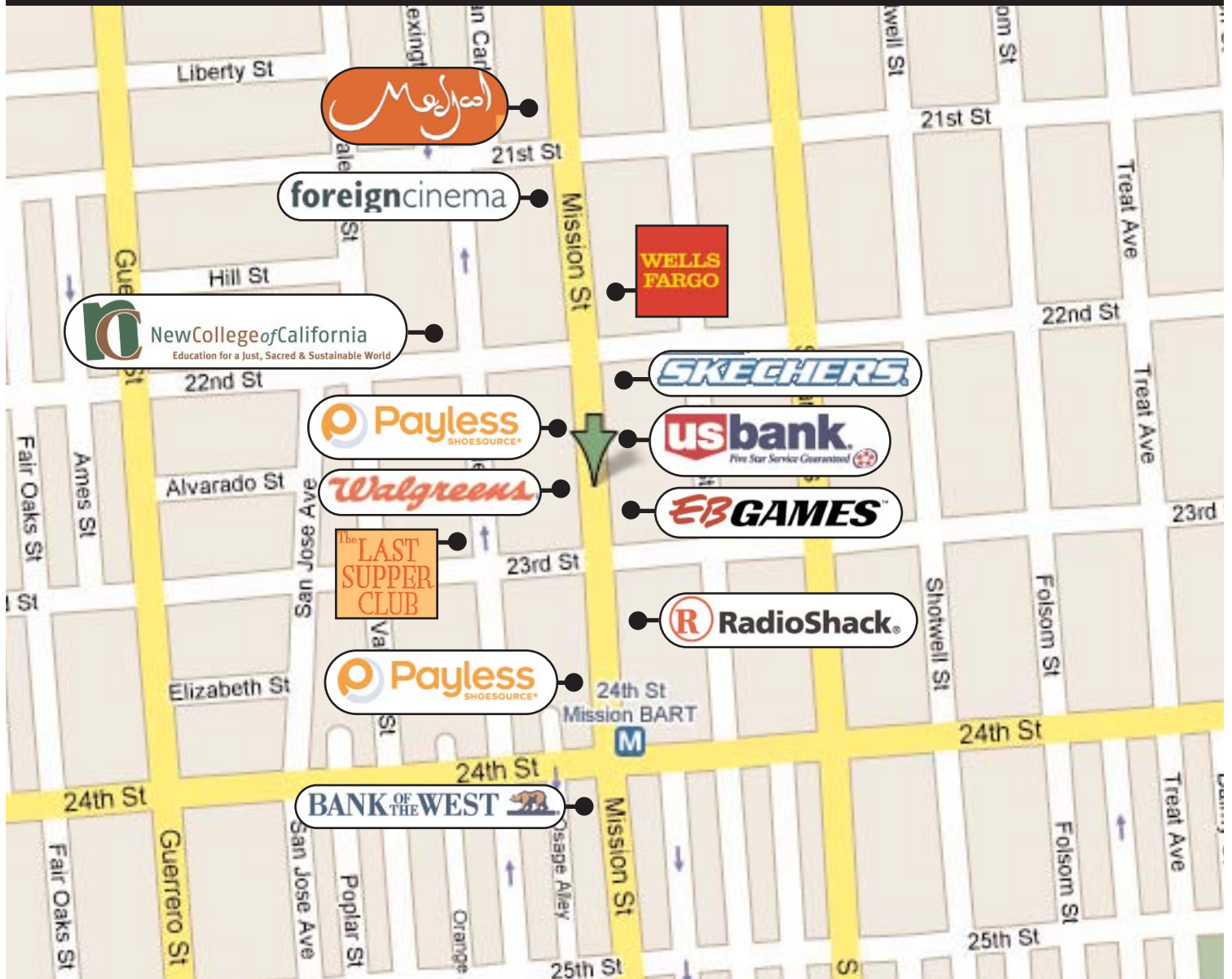
415.477.8498 • susan@starboardnet.com

The information has been secured by Starboard TCN from sources believed to be reliable. It is not guaranteed, however, and should be verified prior to consummating any transaction.

STARBOARD
TCN RETAIL GROUP
Where Retail Comes to Life

2665 Mission Street

San Francisco, CA



FOR MORE INFORMATION CONTACT:

LOUIS CORNEJO

415.438.2144 • louis@starboardnet.com

SUSAN JORDAN

415.477.8498 • susan@starboardnet.com

The information has been secured by Starboard TCN from sources believed to be reliable. It is not guaranteed, however, and should be verified prior to consummating any transaction.

STARBOARD
TCN RETAIL GROUP

Where Retail Comes to Life

2665 Mission Street

San Francisco, CA

SUMMARY DEMOGRAPHIC PROFILE

1990-200 Census, 2005 Estimates & 2010 Projections

Calculated using proportional block groups • Lat/Log 37.754453/-122.418662 • April 2007

2665 Mission St SAN FRANCISCO, California		.50 mi radius	1.00 mi radius	2.00 mi radius
POPULATION	2005 Estimated Population	30,839	86,552	234,288
	2010 Projected Population	28,997	81,330	221,651
	2000 Census Population	32,843	92,227	247,623
	1990 Census Population	32,153	88,837	229,523
	Historical Annual Growth 1990 to 2005	-0.3%	-0.2%	0.1%
	Projected Annual Growth 2005 to 2010	-1.2%	-1.2%	-1.1%
	2005 Median Age	34.6	36.0	37.8
HOUSEHOLDS	2005 Estimated Households	11,320	35,194	101,076
	2010 Projected Households	10,854	33,704	97,534
	2000 Census Households	11,867	36,930	105,050
	1990 Census Households	11,527	34,929	96,785
	Historical Annual Growth 1990 to 2005	-0.1%	0.1%	0.3%
	Projected Annual Growth 2005 to 2010	-0.8%	-0.8%	-0.7%
POPULATION BY RACE	2005 Estimated White	58.4%	61.3%	57.7%
	2005 Estimated Black or African American	2.4%	3.3%	8.0%
	2005 Estimated Asian & Pacific Islander	12.0%	13.0%	19.2%
	2005 Estimated American Indian & Native Alaskan	0.8%	0.7%	0.5%
	2005 Estimated Other Races	26.3%	21.8%	14.6%
	2005 Estimated Hispanic	50.4%	38.5%	23.5%
INCOME	2005 Estimated Average Household Income	\$ 74,226	\$ 87,076	\$ 86,994
	2005 Estimated Median Household Income	\$ 57,500	\$ 65,485	\$ 64,761
	2005 Estimated Per Capita Income	\$ 28,048	\$ 36,324	\$ 38,662
EDUCATION (AGE 25+)	2005 Elementary	16.0%	12.4%	9.9%
	2005 Some High School	12.7%	11.1%	11.2%
	2005 High School Graduate	22.1%	21.2%	21.6%
	2005 Some College	17.5%	18.7%	20.3%
	2005 Associates Degree Only	5.6%	6.5%	6.8%
	2005 Bachelors Degree Only	17.4%	19.4%	19.4%
	2005 Graduate Degree	8.7%	10.7%	10.9%
BUSINESS	Number of Businesses	1,491	4,176	13,359
	Total Number of Employees	7,151	31,450	129,032
	Employee Population per Business	4.8	7.5	9.7
	Residential Population per Business	20.7	20.7	17.5

FOR MORE INFORMATION CONTACT:

LOUIS CORNEJO

415.438.2144 • louis@starboardnet.com

SUSAN JORDAN

415.477.8498 • susan@starboardnet.com

The information has been secured by Starboard TCN from sources believed to be reliable. It is not guaranteed, however, and should be verified prior to consummating any transaction.

 **TCN RETAIL GROUP**
Where Retail Comes to Life