

245 11TH STREET

SAN FRANCISCO, CA



## PERFECT SUBLEASE FOR NONPROFITS IN SOMA

**PREMISES:** THIRD FLOOR, APPROX. 2,250

**LEASE RATE:** \$26.00 /SQ.FT./Yr/ IG

- Large Reception area
- Shared kitchen and shared conference room
- Office intensive

**TERM:** 1-5 Years

For more information please contact:

**HANS HANSSON 415.765.6897**  
hans@starboardnet.com

**CRAIG HANSSON 415.694.5367**  
craig@starboardnet.com

 **STARBOARD TCN**  
WORLDWIDE COMMERCIAL REAL ESTATE  
*Local Focus, Global Reach*

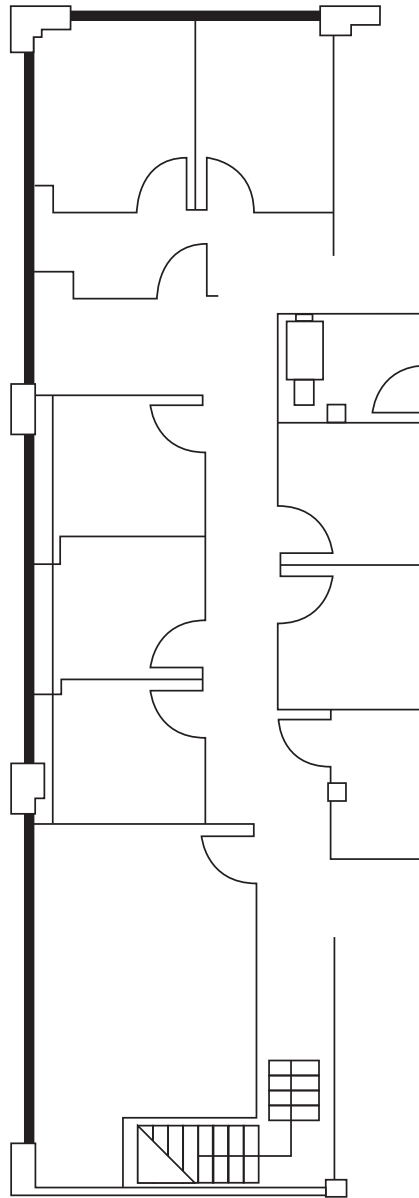
The information has been secured by Starboard TCN from sources believed to be reliable. It is not guaranteed, however, and should be verified prior to consummating any transaction.

 **TCN**  
WORLDWIDE

33 NEW MONTGOMERY STREET | SUITE 1230 | SAN FRANCISCO | CA 94105 | 415.765.6900 | FAX 415.956.2003

**245 11TH STREET**

**SAN FRANCISCO, CA**



**THIRD FLOOR**

For more information please contact:

**HANS HANSSON 415.765.6897**

**[hans@starboardnet.com](mailto:hans@starboardnet.com)**

**CRAIG HANSSON 415.694.5367**

**[craig@starboardnet.com](mailto:craig@starboardnet.com)**

 **STARBOARD TCN**  
WORLDWIDE COMMERCIAL REAL ESTATE  
*Local Focus, Global Reach*

The information has been secured by Starboard TCN from sources believed to be reliable. It is not guaranteed, however, and should be verified prior to consummating any transaction.

 **TCN**  
WORLDWIDE

33 NEW MONTGOMERY STREET | SUITE 1230 | SAN FRANCISCO | CA 94105 | 415.765.6900 | FAX 415.956.2003