

181 SOUTH PARK

SAN FRANCISCO, CA



**NEWLY CONSTRUCTED OFFICE/RETAIL SUITES ON SOUTH PARK
CAN BE USED FOR DESIGN TECH OR MEDICAL**

PREMISES:

FIRST FLOOR 2,073 Sq. Ft.
FIRST FLOOR 1,760 Sq. Ft.
SECOND FLOOR 2,215 Sq. Ft.
SECOND FLOOR 1,760 Sq. Ft.

RATE: \$38/Sq. Ft./Yr IG

TERM:

First Floors: 3-10 years
Second Floors: 3-5 years



FEATURES

- Approximately 10,000 rentable square feet located on the first and second floors.
- 6 on- site parking stalls
- Excellent South Park location, adjacent to Pacific Bell Park.
- Excellent access to public transportation.

For more information please contact:

HANS HANSSON 415.765.6897

hans@starboardnet.com

CRAIG HANSSON 415.694.5367

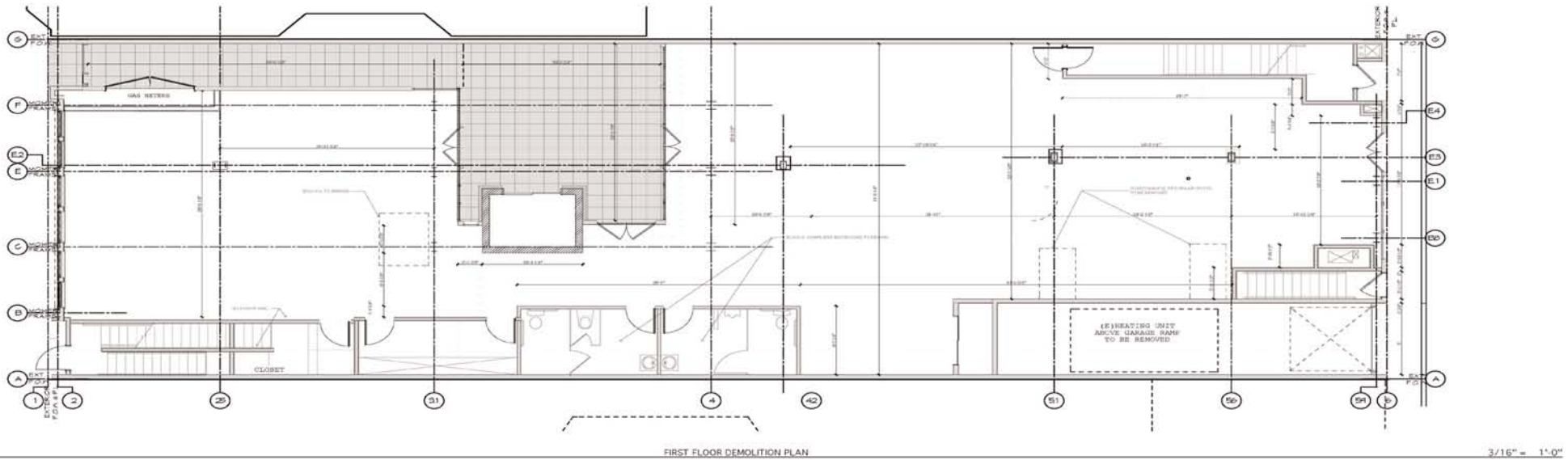
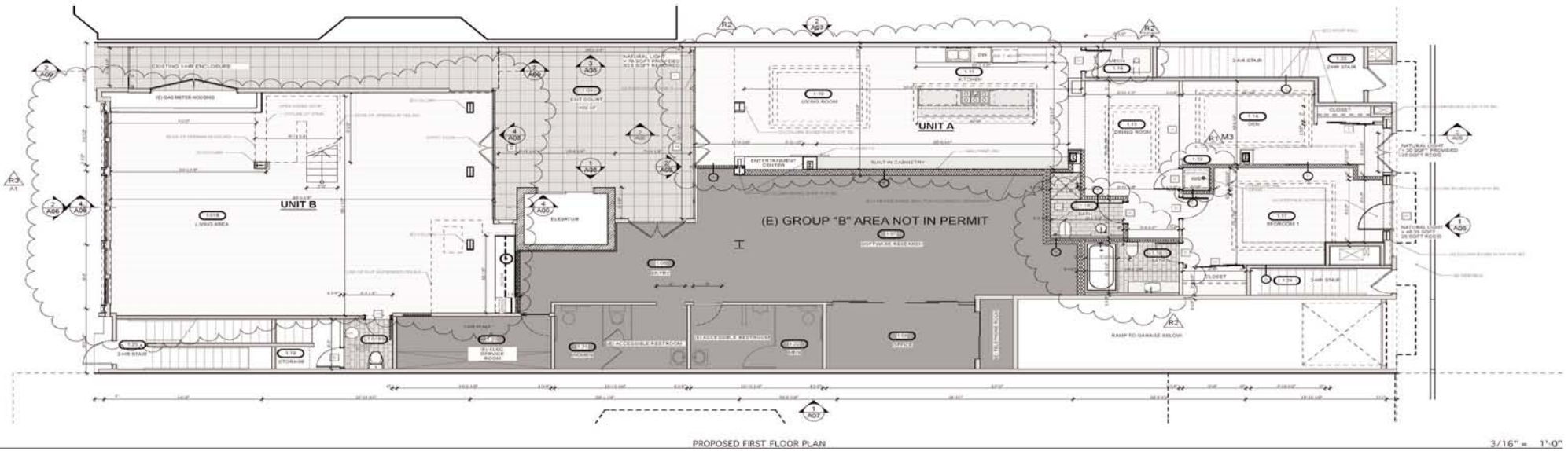
craig@starboardnet.com



The information has been secured by Starboard TCN from sources believed to be reliable. It is not guaranteed, however, and should be verified prior to consummating any transaction.



33 NEW MONTGOMERY STREET | SUITE 1230 | SAN FRANCISCO | CA 94105 | 415.765.6900 | FAX 415.956.2003



For more information please contact:

HANS HANSSON 415.765.6897

CRAIG HANSSON 415.694.5367

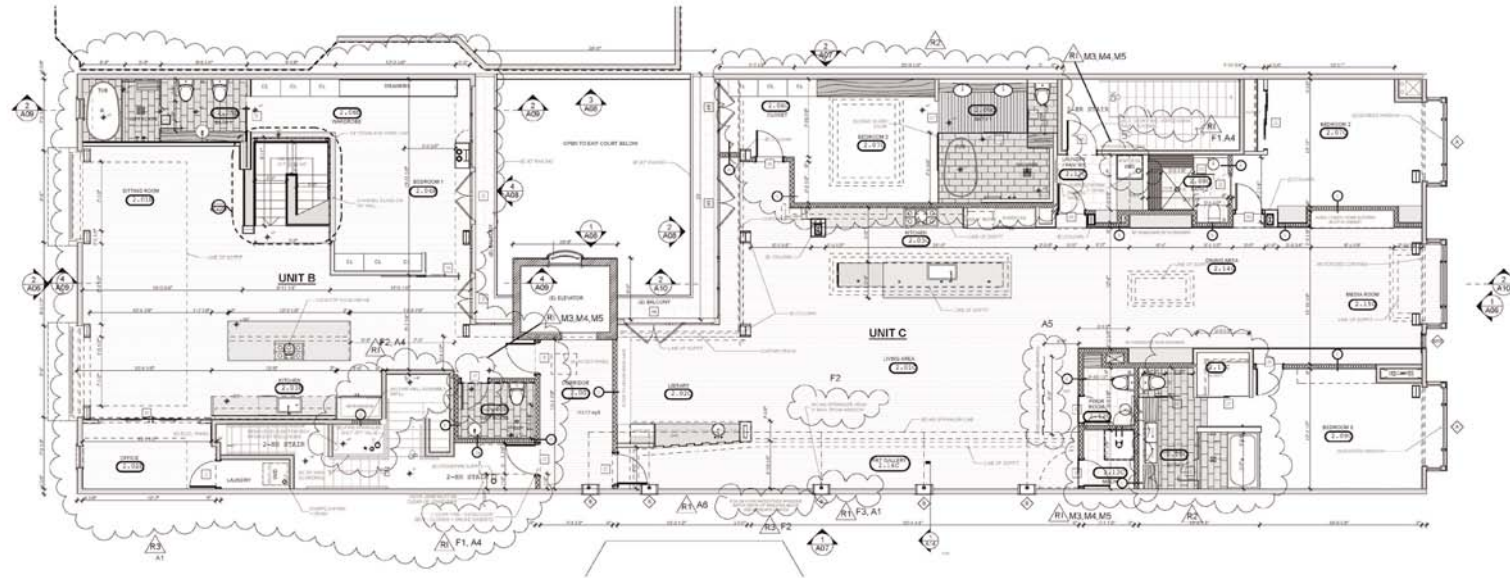
hans@starboardnet.com

craig@starboardnet.com

STARBOARD TCN
WORLDWIDE COMMERCIAL REAL ESTATE
Local Focus, Global Reach

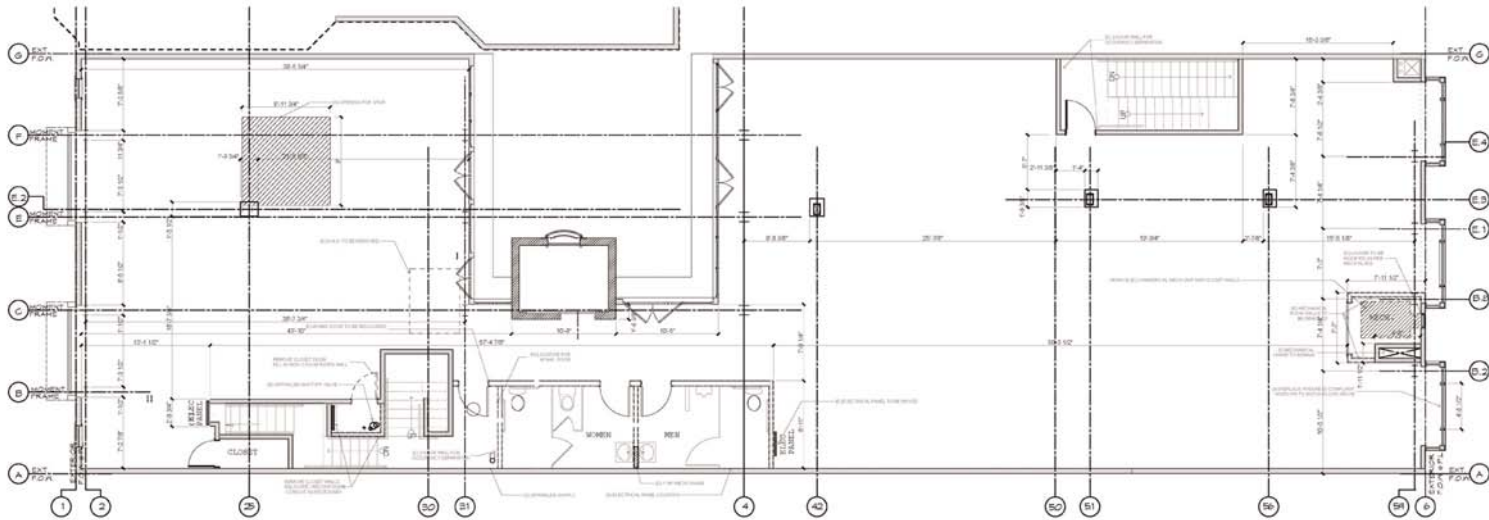
The information has been secured by Starboard TCN from sources believed to be reliable. It is not guaranteed, however, and should be verified prior to consummating any transaction.





PROPOSED SECOND FLOOR PLAN

3/16" = 1'-0"



SECOND FLOOR DEMO PLAN

3/16" = 1'-0"

For more information please contact:

HANS HANSSON 415.765.6897

CRAIG HANSSON 415.694.5367

hans@starboardnet.com

craig@starboardnet.com



The information has been secured by Starboard TCN from sources believed to be reliable. It is not guaranteed, however, and should be verified prior to consummating any transaction.

